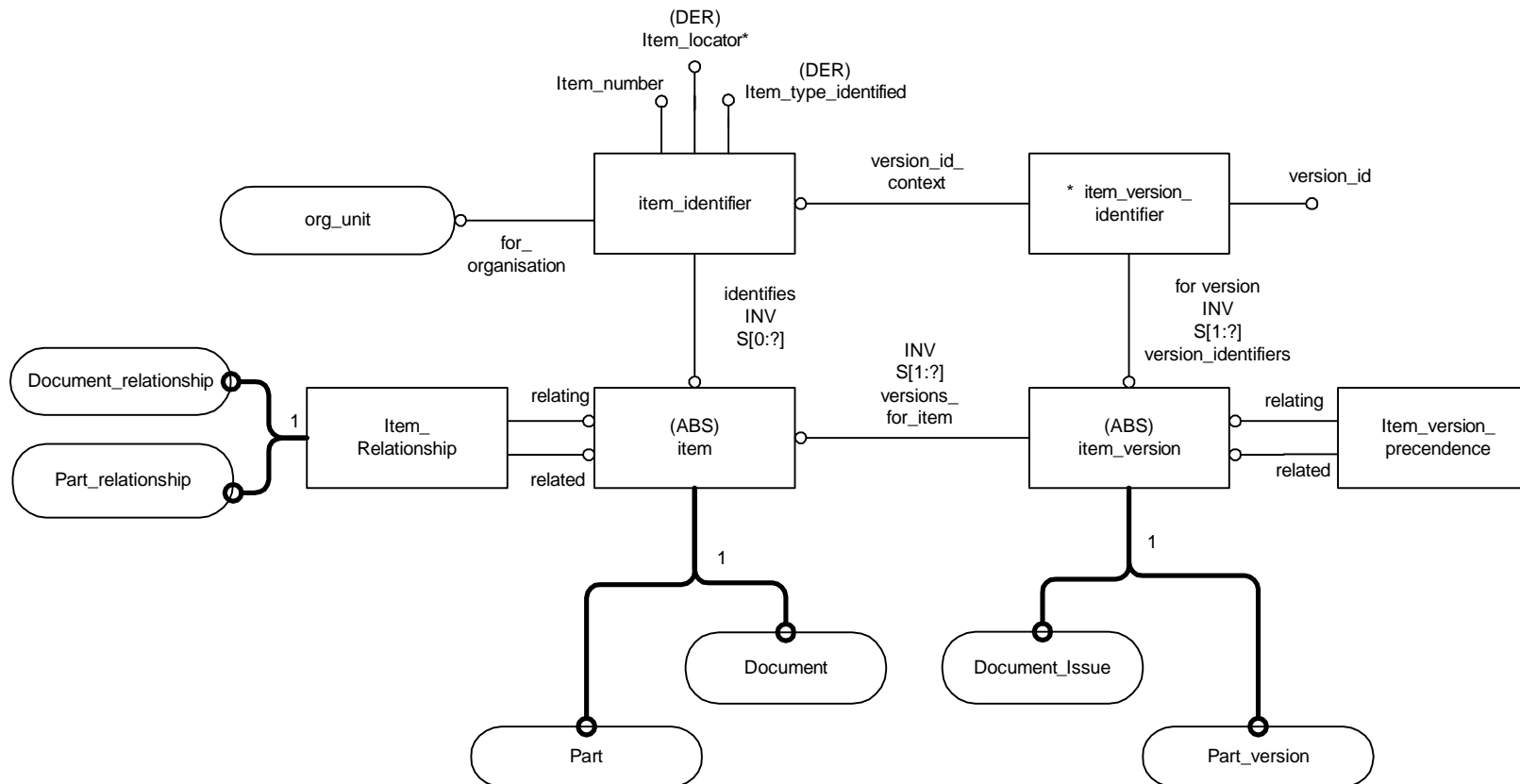


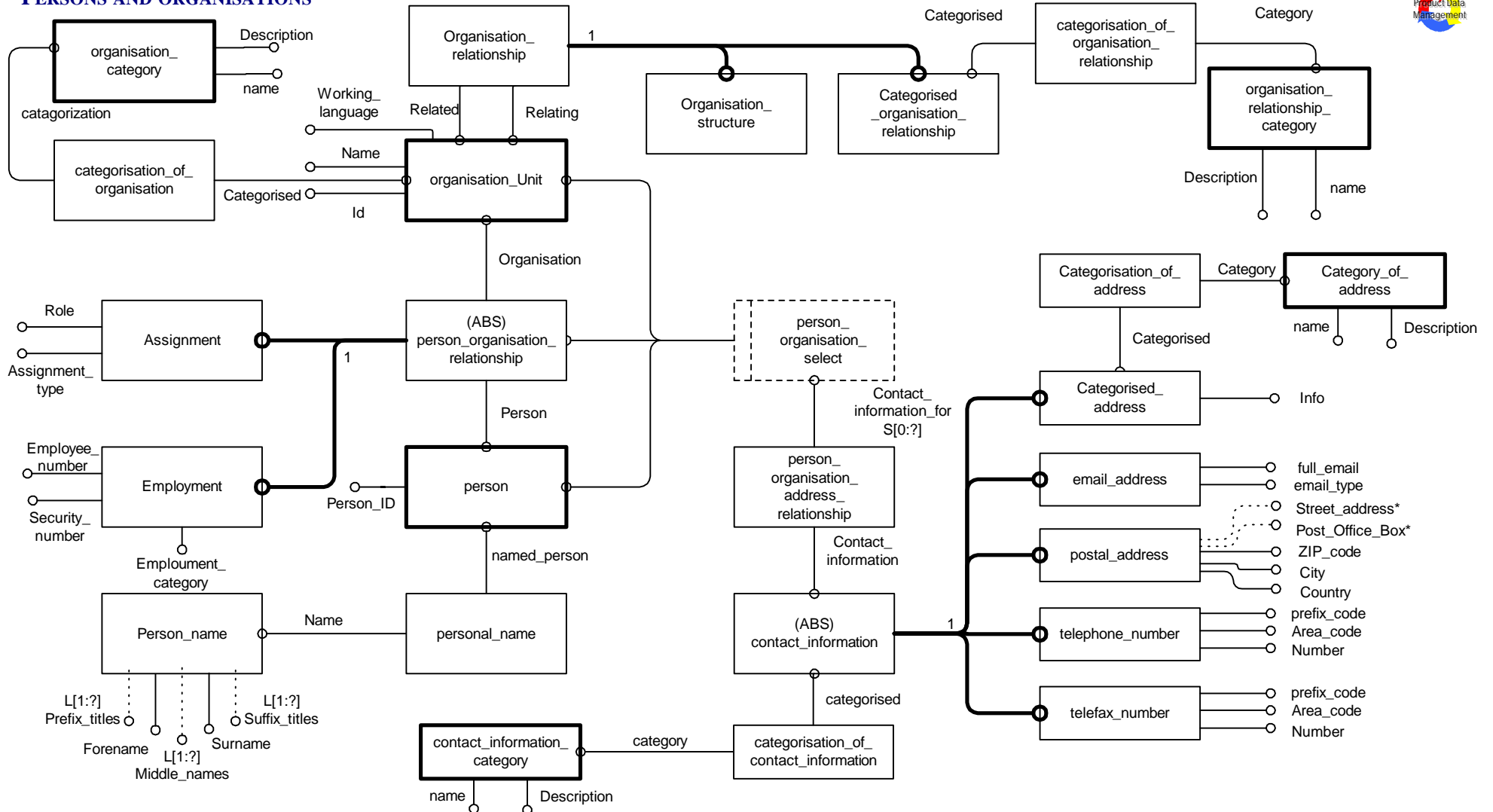
VOLVO	Document No. PDMReq-4.4	Title Requirements model		Diagram 1/19
Issuer (dept, name, phone, place, sign) Patrick Wennergren	Status Frozen	Date 98-11-03	Version 3.2	Reg no
Subject Logical Platform for Volvo PDM information requirements				

ITEM CONCEPTS



VOLVO	Document No. PDMReq-4.4	Title Requirements model		Diagram 2/19
Issuer (dept, name, phone, place, sign) Patrick Wennergren	Status Frozen	Date 98-11-03	Version 3.2	Reg no
Subject Logical Platform for Volvo PDM information requirements				

PERSONS AND ORGANISATIONS



VOLVO	Document No. PDMReq-4.4	Title Requirements model		Diagram 3/19
Issuer (dept, name, phone, place, sign) Patrick Wennergren	Status Frozen	Date 98-11-03	Version 3.2	Reg no
Subject Logical Platform for Volvo PDM information requirements				

DATE AND TIME CONCEPTS



Definitions

Wall_clock_time: Local date and time.

Timezone_name = The name of a local timezone.

Timezone_acronym = The acronym for the name of a local timezone.
Example: CET for Central European Time.

UTC_offset = Wall_clock relative to UTC (see ISO8601), stored in minutes, but generally presented in hours. Eastern offset is positive and presented with a plus sign.

DST_rule = Rule for Daylight Saving Time.

Notes

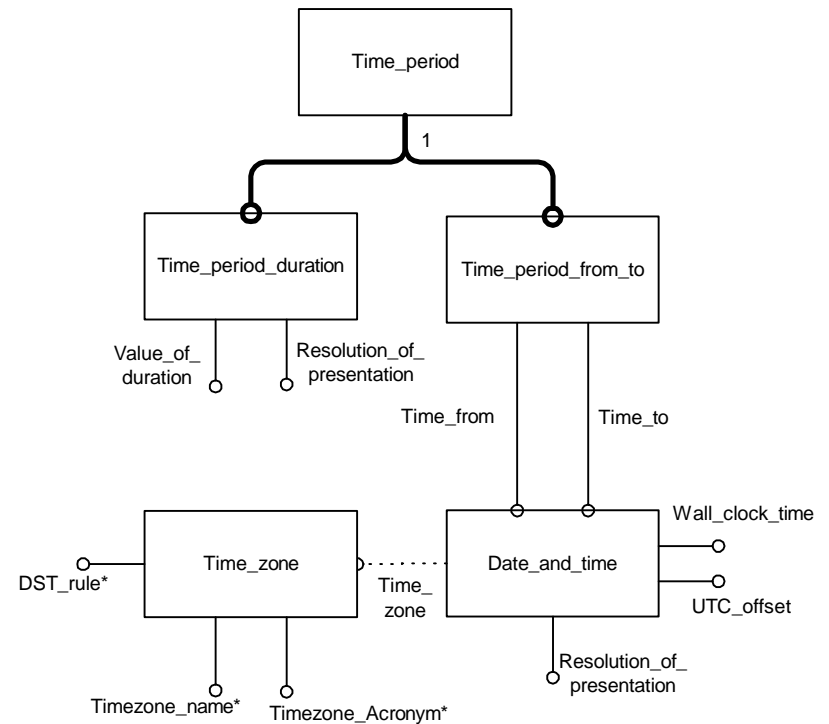
1) Calendar date, ordinal date, or week and of day-of-week is calculated, via a method (service) from this date and time information.

2) Resolution of presentation of a timestamp determines precision of the of a Date_and_time given: (Year, Month, Week, Day, Hour, Minute, Second). Internal storage is seconds relative to a base time.

References

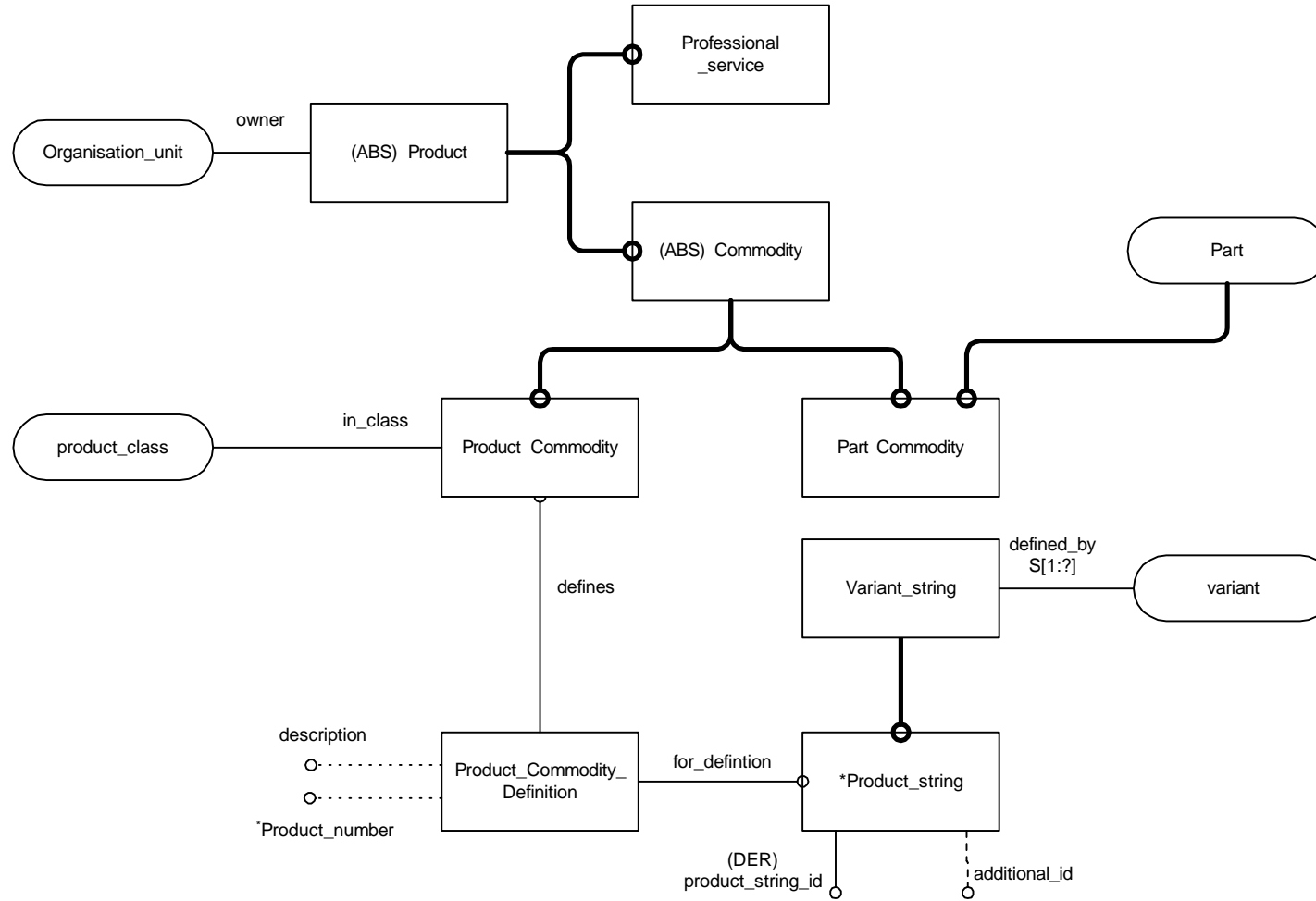
ISO 8601

Volvo STD 9122,1,



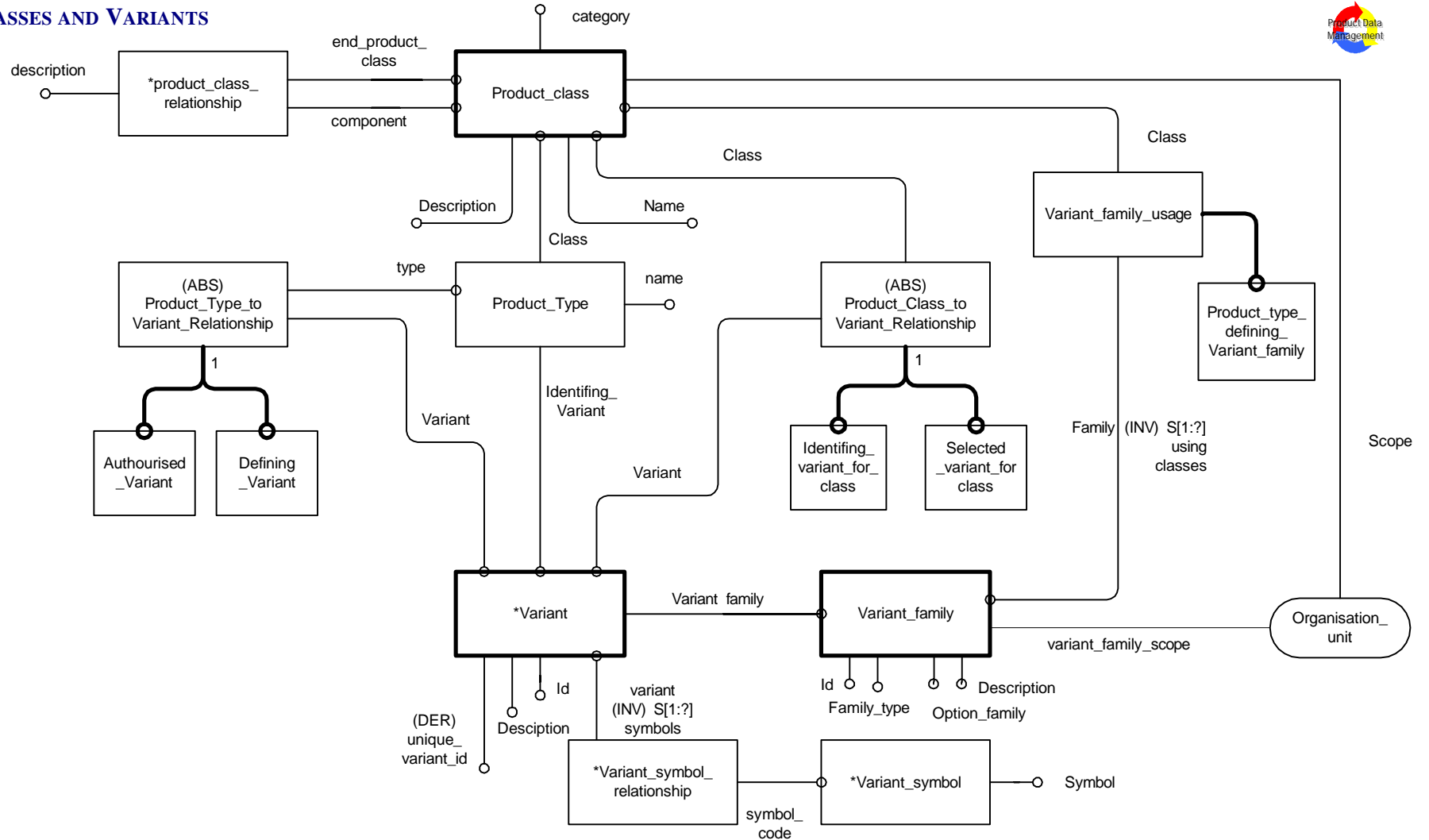
VOLVO	Document No. PDMReq-4.4	Title Requirements model		Diagram 4/19
Issuer (dept, name, phone, place, sign) Patrick Wennergren	Status Frozen	Date 98-11-03	Version 3.2	Reg no
Subject Logical Platform for Volvo PDM information requirements				

PRODUCT STRUCTURE - PRODUCTS



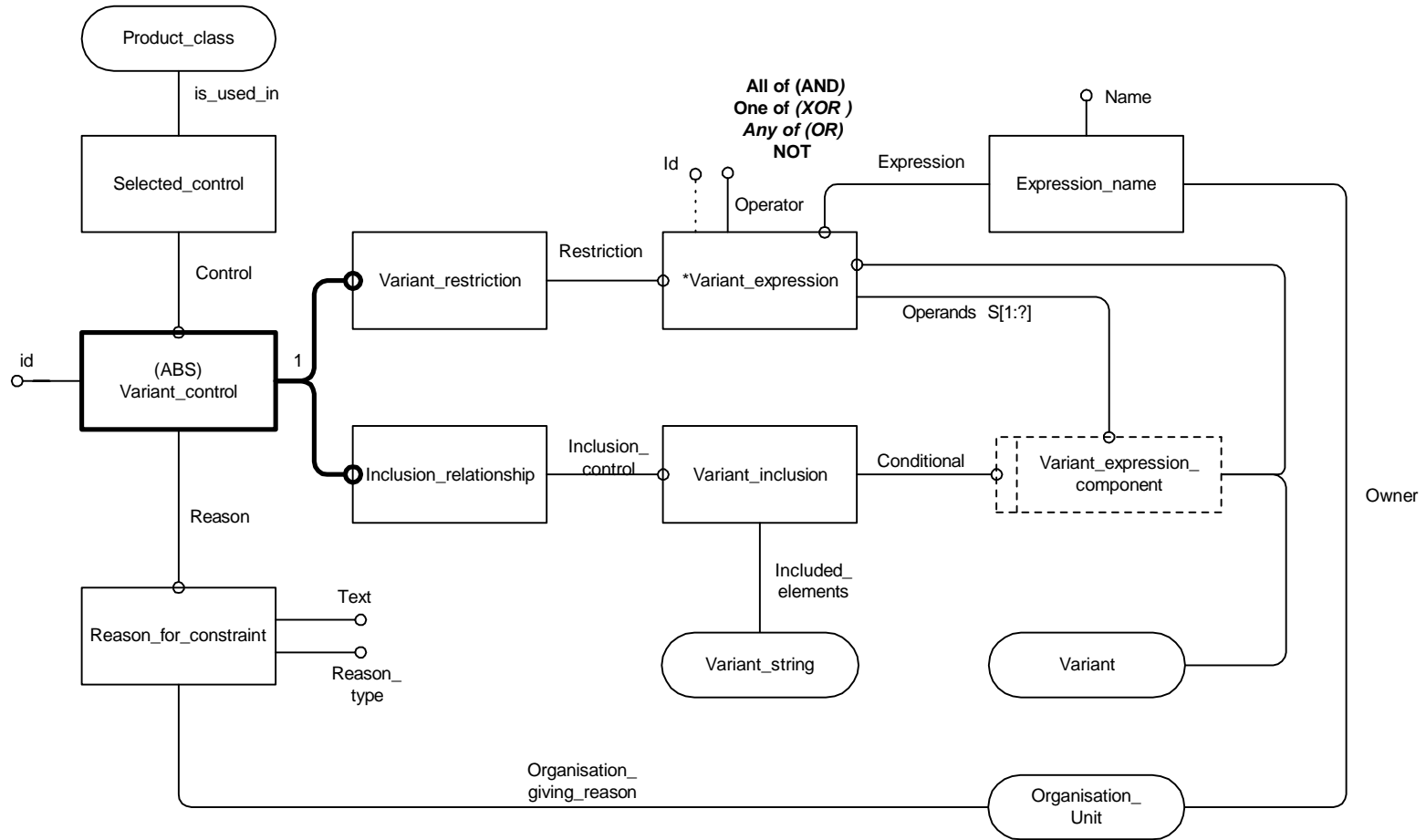
VOLVO	Document No. PDMReq-4.4	Title Requirements model		Diagram 5/19
Issuer (dept, name, phone, place, sign) Patrick Wennergren	Status Frozen	Date 98-11-03	Version 3.2	Reg no
Subject Logical Platform for Volvo PDM information requirements				

PRODUCT CLASSES AND VARIANTS



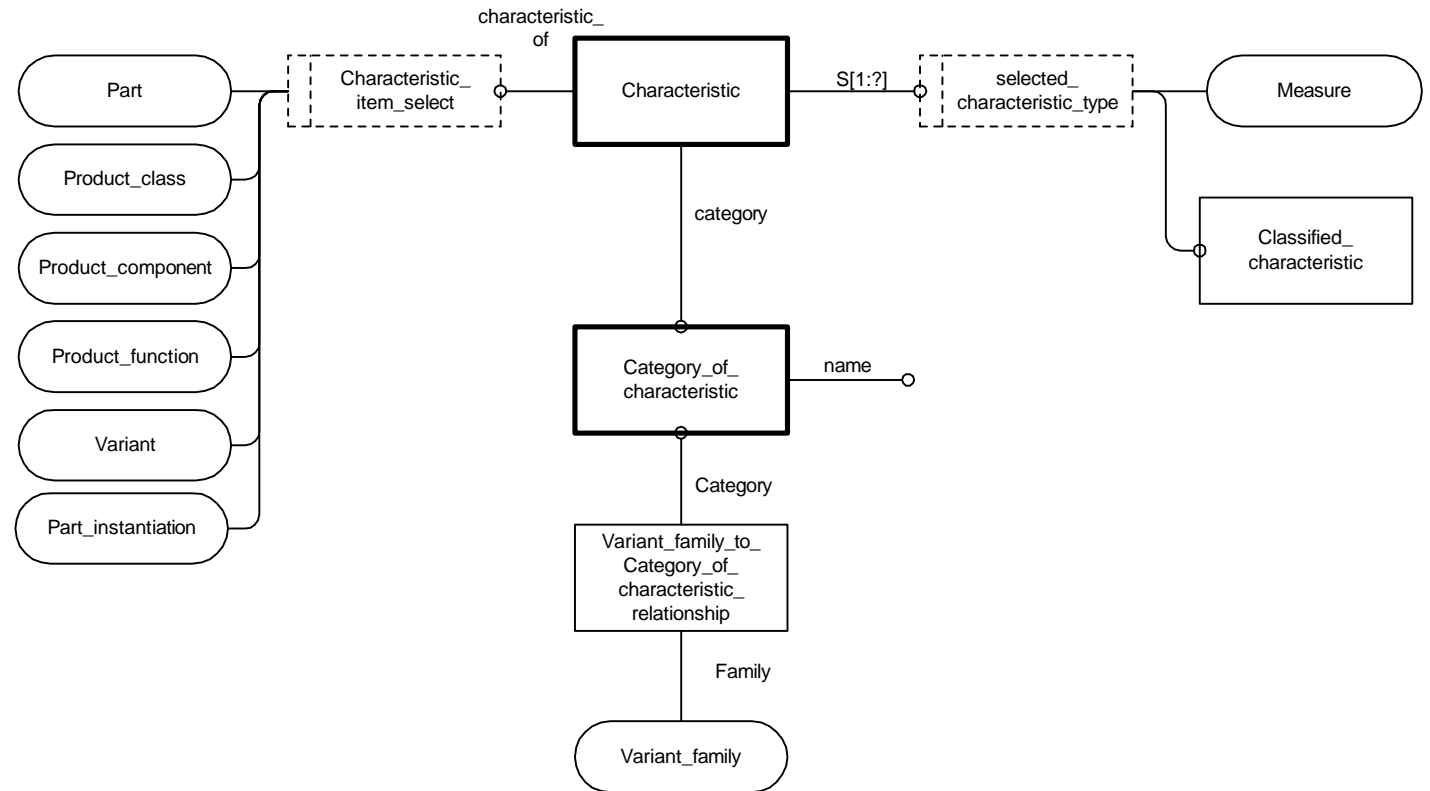
VOLVO	Document No. PDMReq-4.4	Title Requirements model		Diagram 6/19
Issuer (dept, name, phone, place, sign) Patrick Wennergren	Status Frozen	Date 98-11-03	Version 3.2	Reg no
Subject Logical Platform for Volvo PDM information requirements				

VARIANT STRUCTURES



VOLVO	Document No. PDMReq-4.4	Title Requirements model		Diagram 7/19
Issuer (dept, name, phone, place, sign) Patrick Wennergren	Status Frozen	Date 98-11-03	Version 3.2	Reg no
Subject Logical Platform for Volvo PDM information requirements				

PDM CHARACTERISTICS

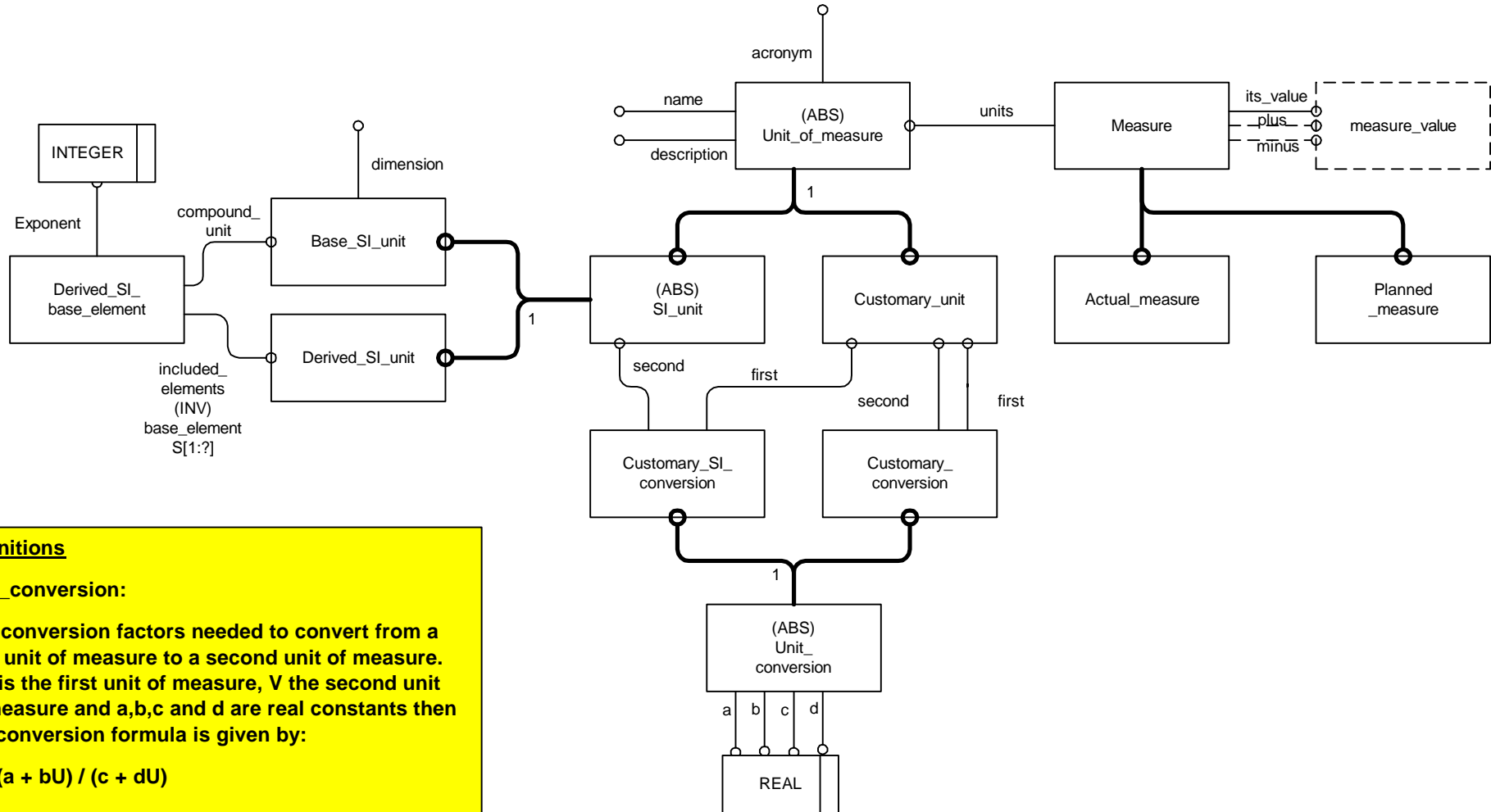


Notes

The different types of characteristic will as a minimum include those required to describe variants, namely:

- colour,
- torque, mass,
- temperature,
- material type, length,
- volume,
- time,
- electrical conductivity

PDM CHARACTERISTICS - MEASURES



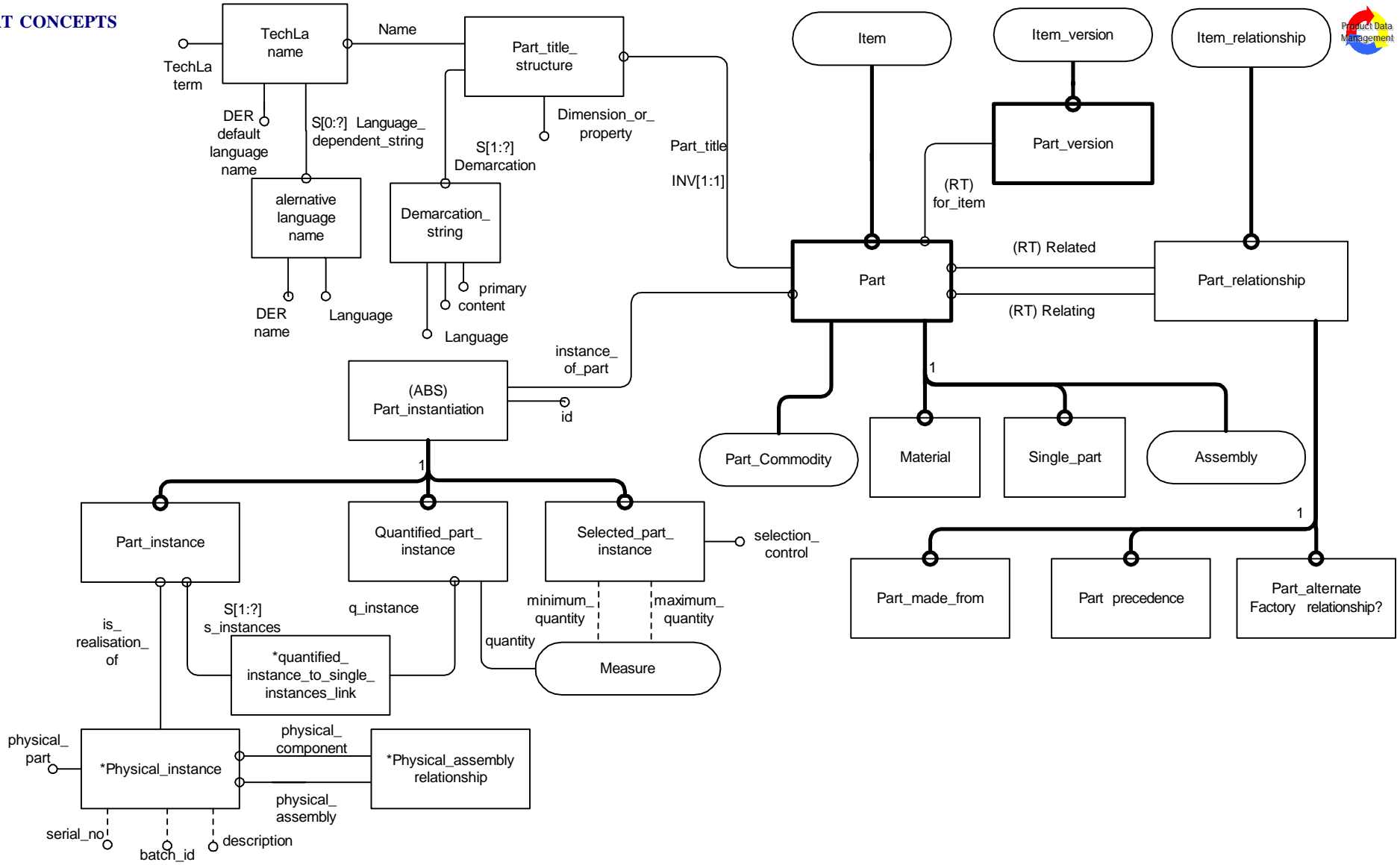
Definitions

Unit_conversion:

The conversion factors needed to convert from a first unit of measure to a second unit of measure. If U is the first unit of measure, V the second unit of measure and a,b,c and d are real constants then the conversion formula is given by:

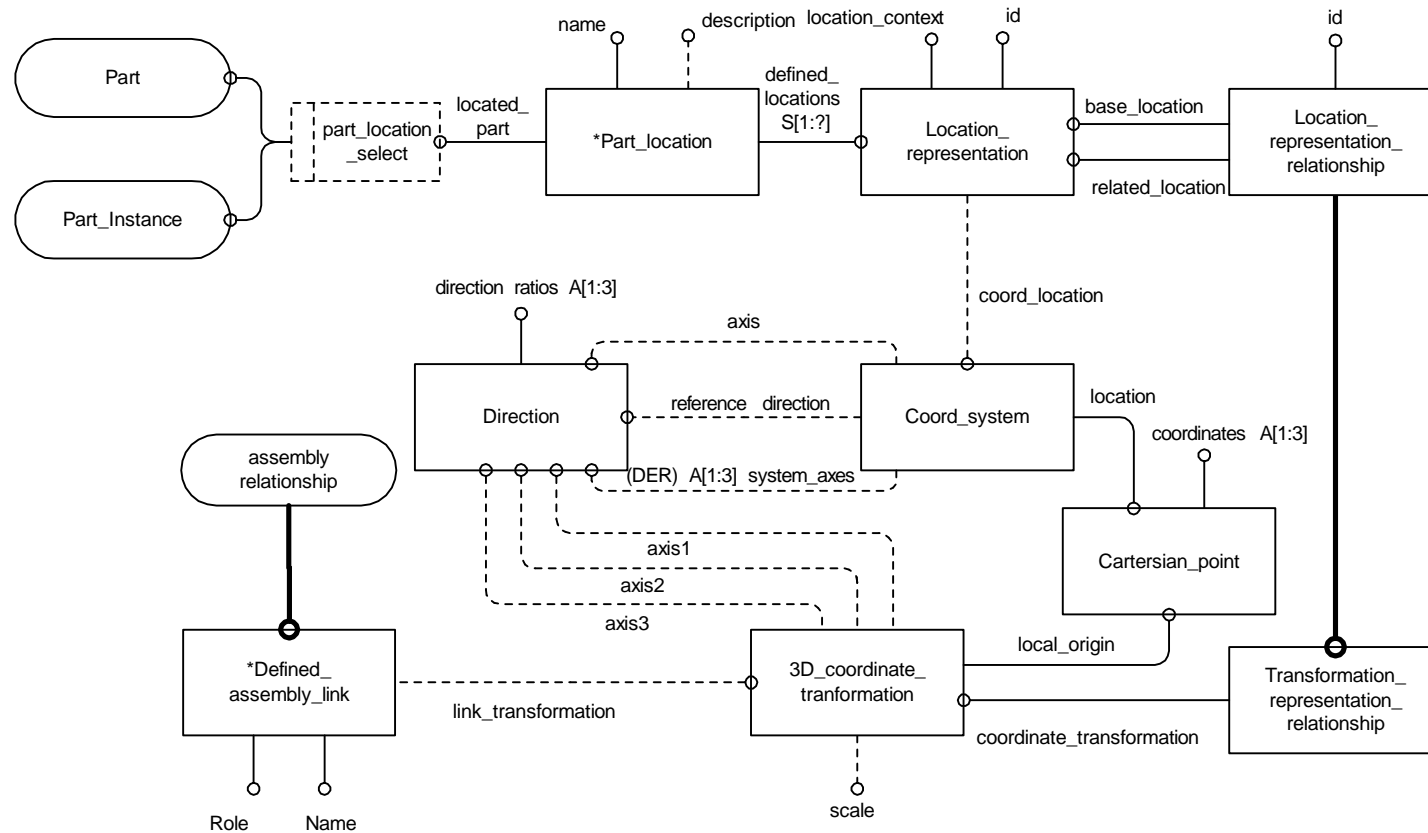
$$V = (a + bU) / (c + dU)$$

PART CONCEPTS



VOLVO	Document No. PDMReq-4.4	Title Requirements model		Diagram 10/19
Issuer (dept, name, phone, place, sign) Patrick Wennergren	Status Frozen	Date 98-11-03	Version 3.2	Reg no
Subject Logical Platform for Volvo PDM information requirements				

PART LOCATION

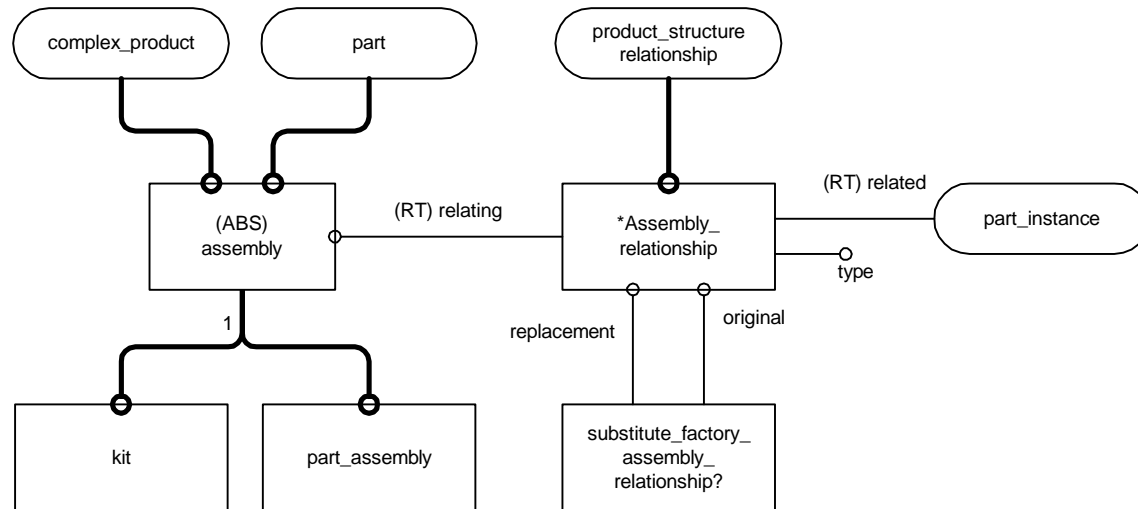


Note:

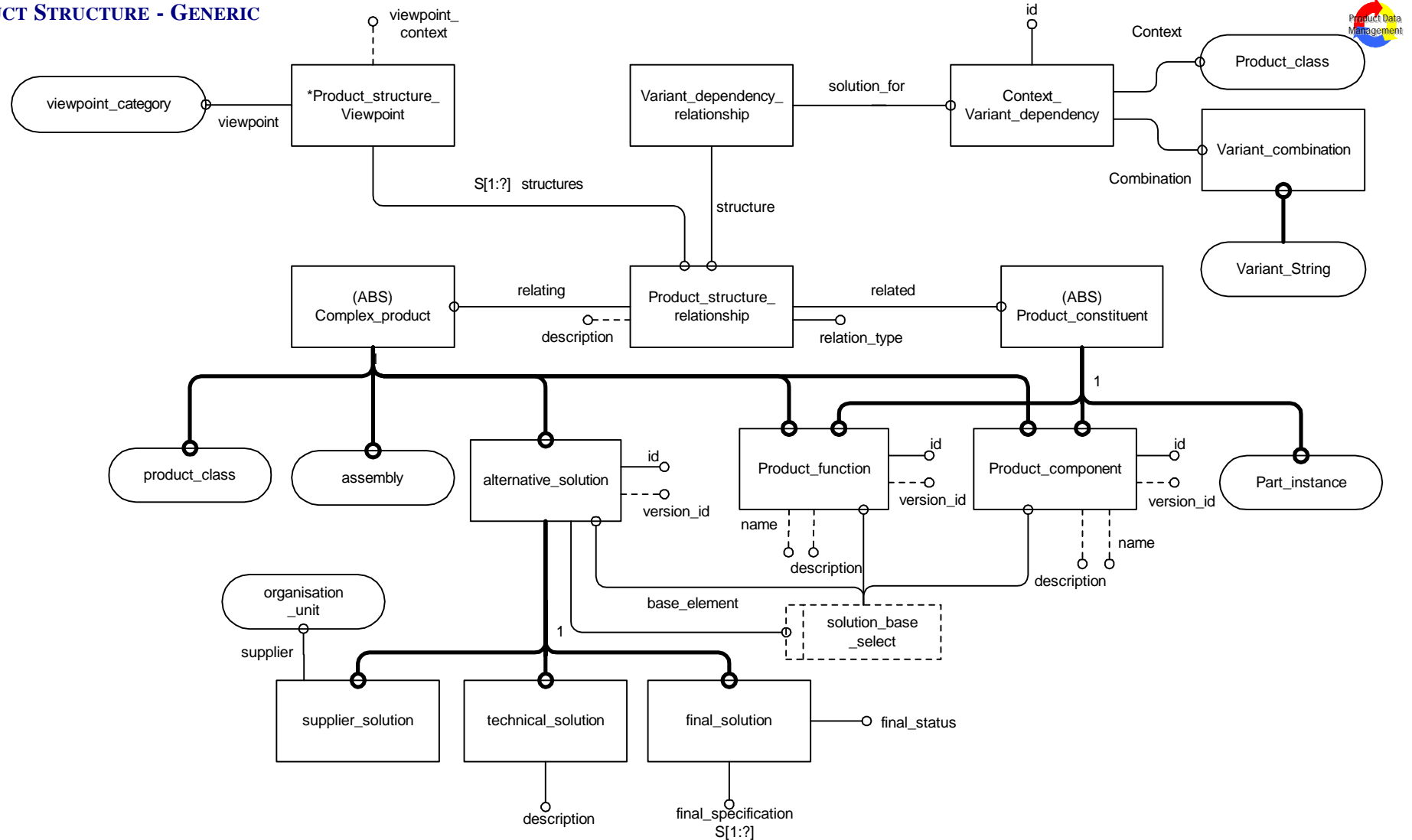
There should be a rule on part_location so that if it is related to an Part_instance then that Part_instance has to reference a part.

VOLVO	Document No. PDMReq-4.4	Title Requirements model		Diagram 11/19
Issuer (dept, name, phone, place, sign) Patrick Wennergren	Status Frozen	Date 98-11-03	Version 3.2	Reg no
Subject Logical Platform for Volvo PDM information requirements				

PRODUCT STRUCTURE - ASSEMBLIES

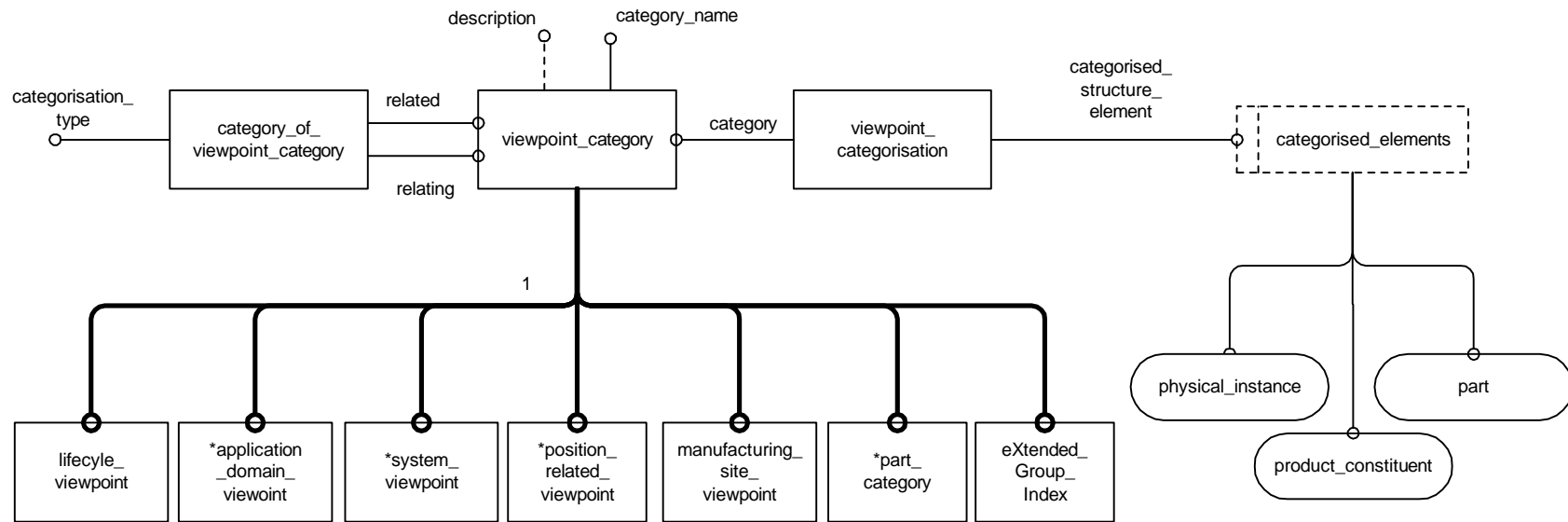


PRODUCT STRUCTURE - GENERIC



VOLVO	Document No. PDMReq-4.4	Title Requirements model		Diagram 13/19
Issuer (dept, name, phone, place, sign) Patrick Wennergren	Status Frozen	Date 98-11-03	Version 3.2	Reg no
Subject Logical Platform for Volvo PDM information requirements				

PRODUCT STR. - CATEGORISATION

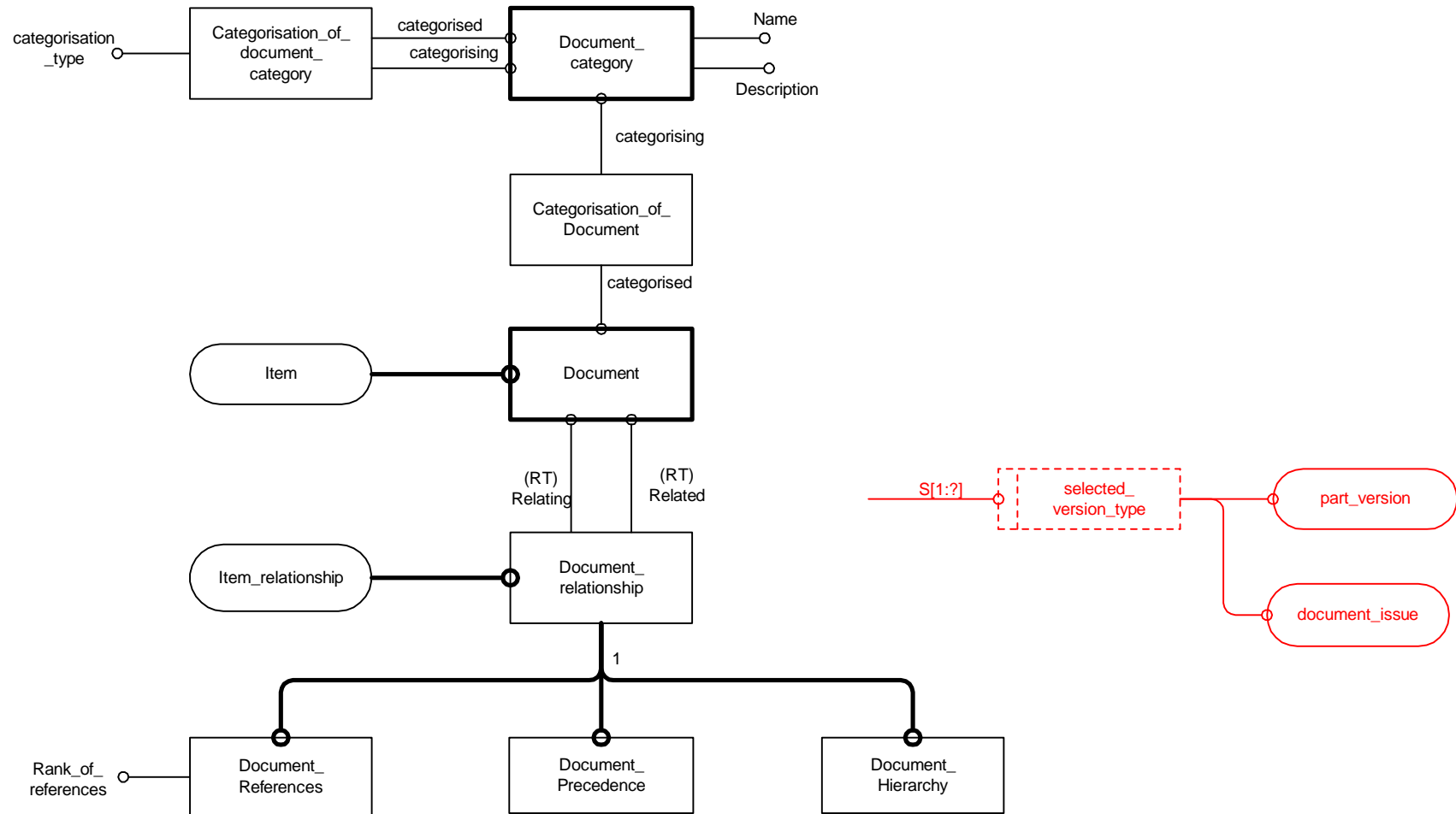


Notes:
The rules on the entities above will enforce valid categorisations and enforce a specified MINIMUM set of categories.

<p>lifecycle_viewpoint</p> <ul style="list-style-type: none"> — requirements — functional — concept — detailed design — production engineering — manufacturing — logistics — after-sales 	<p>application_domain_viewpoint</p> <ul style="list-style-type: none"> — mechanical — electrical — electronic — software
---	---

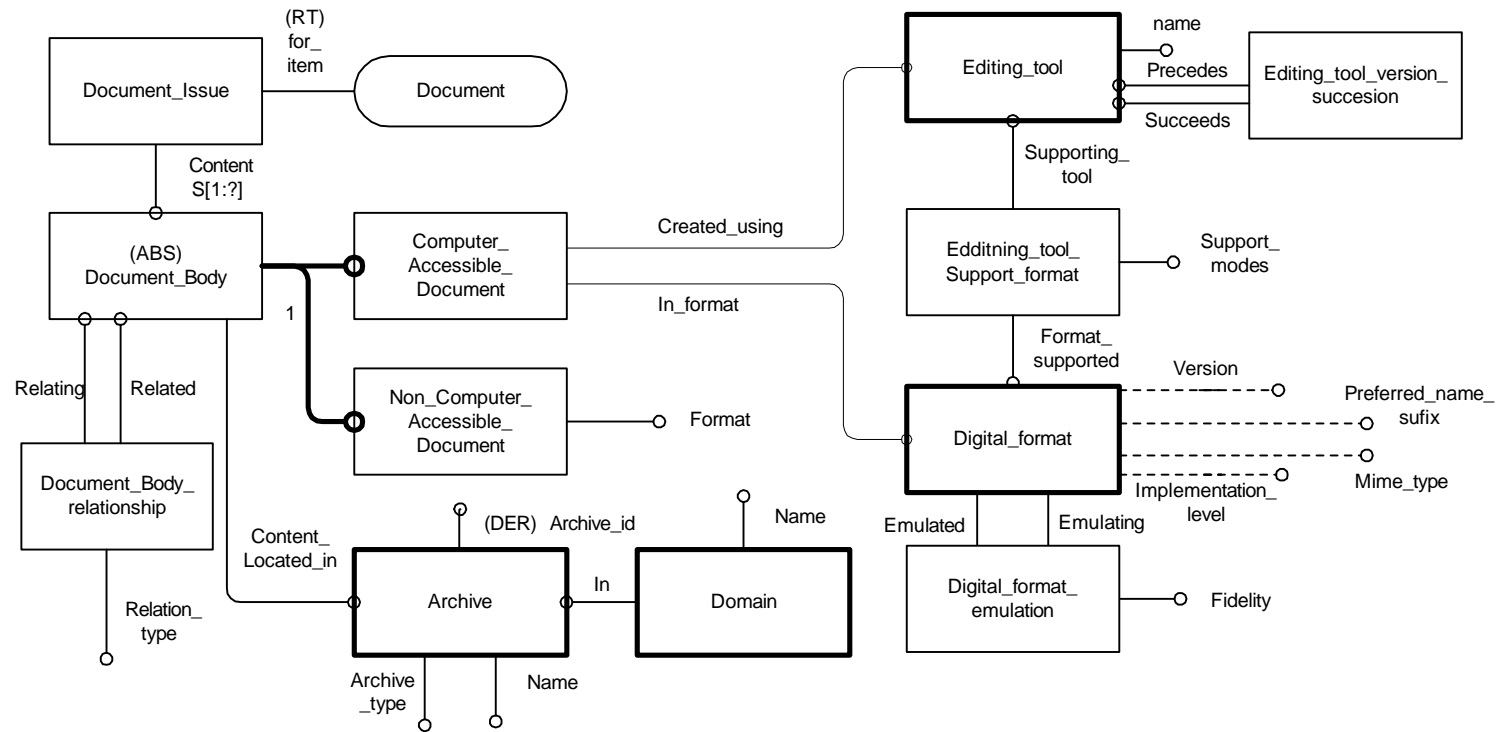
VOLVO	Document No. PDMReq-4.4	Title Requirements model		Diagram 14/19
Issuer (dept, name, phone, place, sign) Patrick Wennergren	Status Frozen	Date 98-11-03	Version 3.2	Reg no
Subject Logical Platform for Volvo PDM information requirements				

DOCUMENTS - CATEGOURISATION



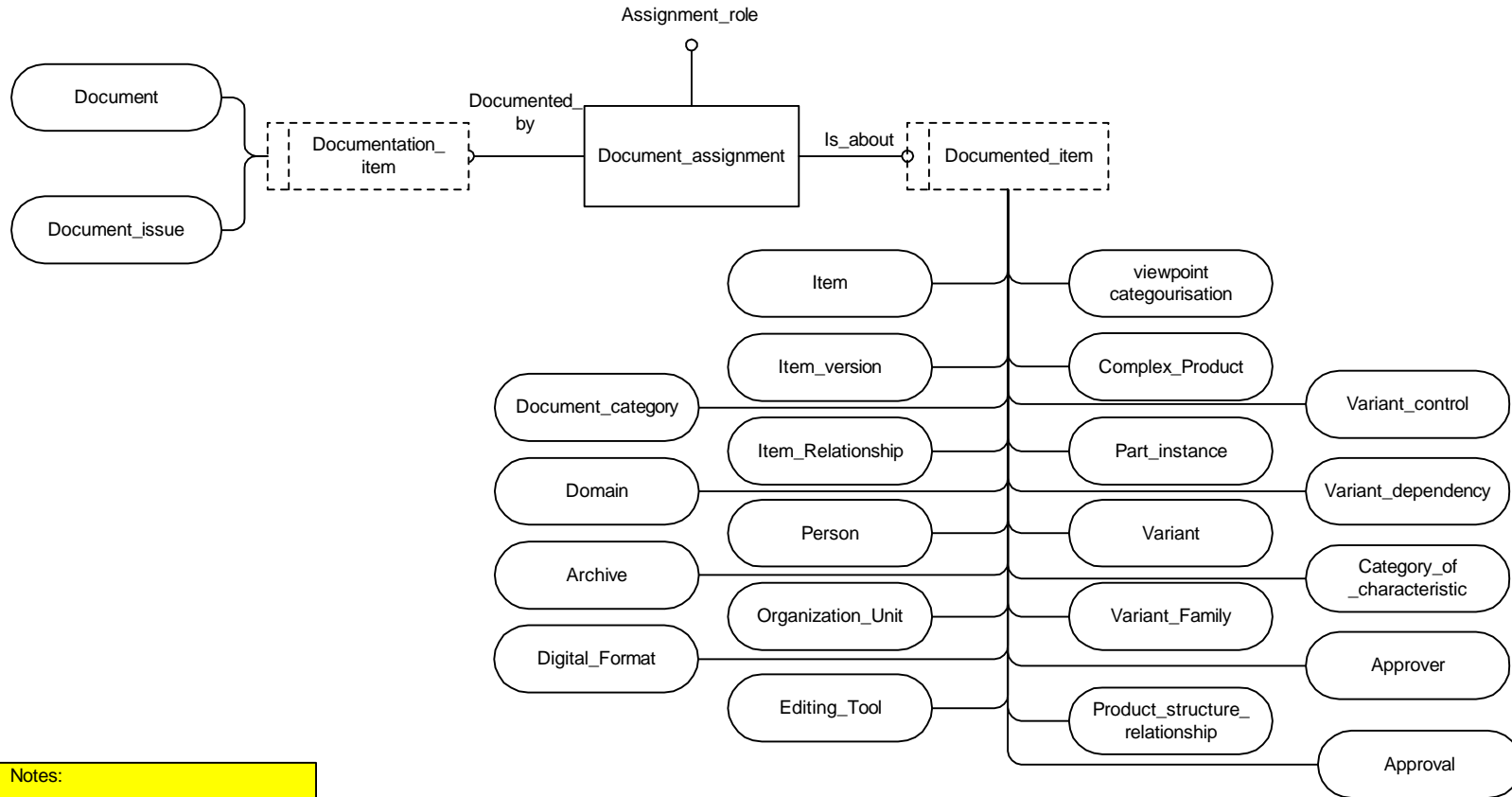
VOLVO	Document No. PDMReq-4.4	Title Requirements model		Diagram 15/19
Issuer (dept, name, phone, place, sign) Patrick Wennergren	Status Frozen	Date 98-11-03	Version 3.2	Reg no
Subject Logical Platform for Volvo PDM information requirements				

DOCUMENTS - STRUCTURE



VOLVO	Document No. PDMReq-4.4	Title Requirements model		Diagram 16/19
Issuer (dept, name, phone, place, sign) Patrick Wennergren	Status Frozen	Date 98-11-03	Version 3.2	Reg no
Subject Logical Platform for Volvo PDM information requirements				

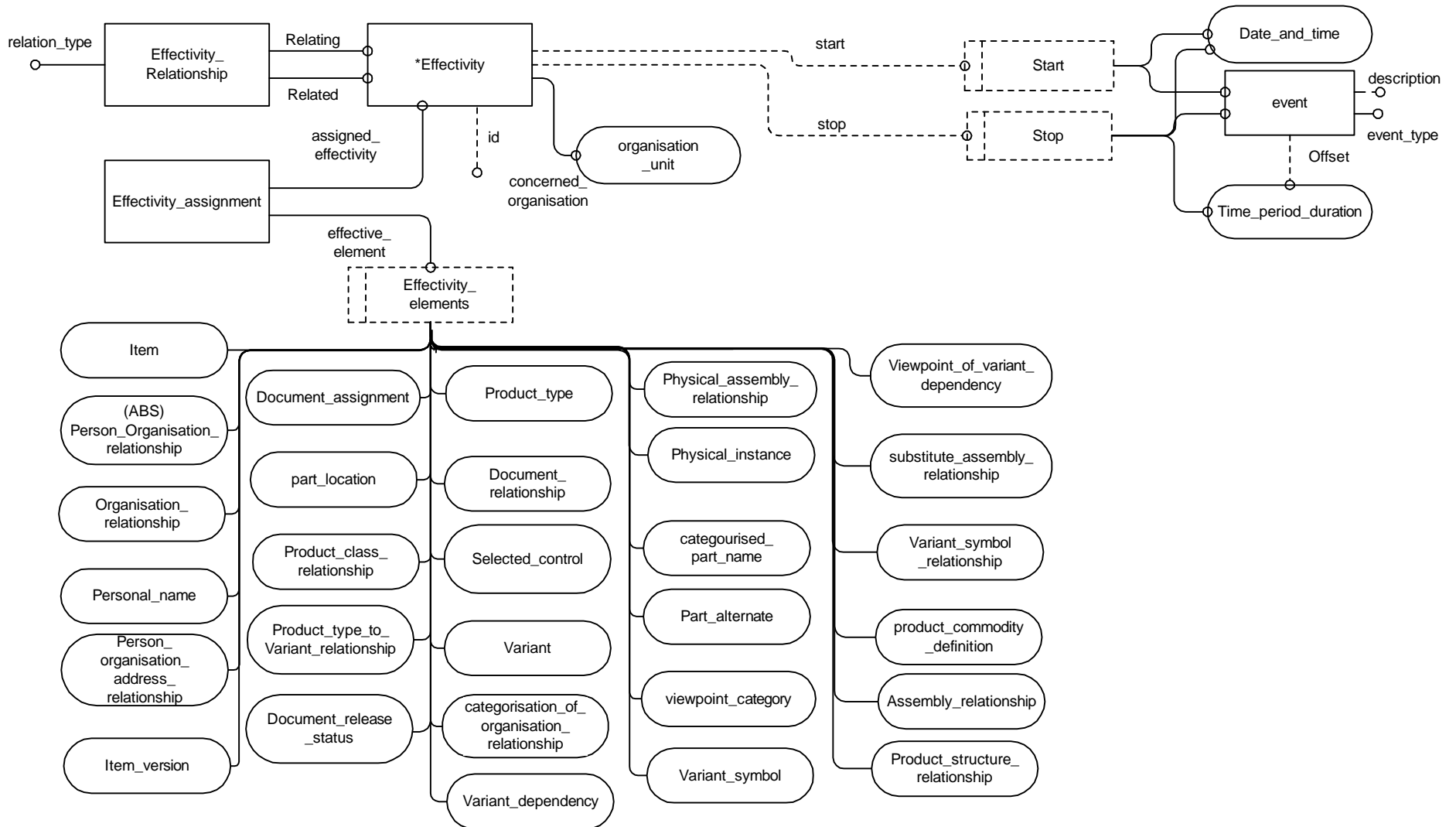
DOCUMENTS - ASSIGNMENT



Notes:
One special assignment_role is the Part_home page !

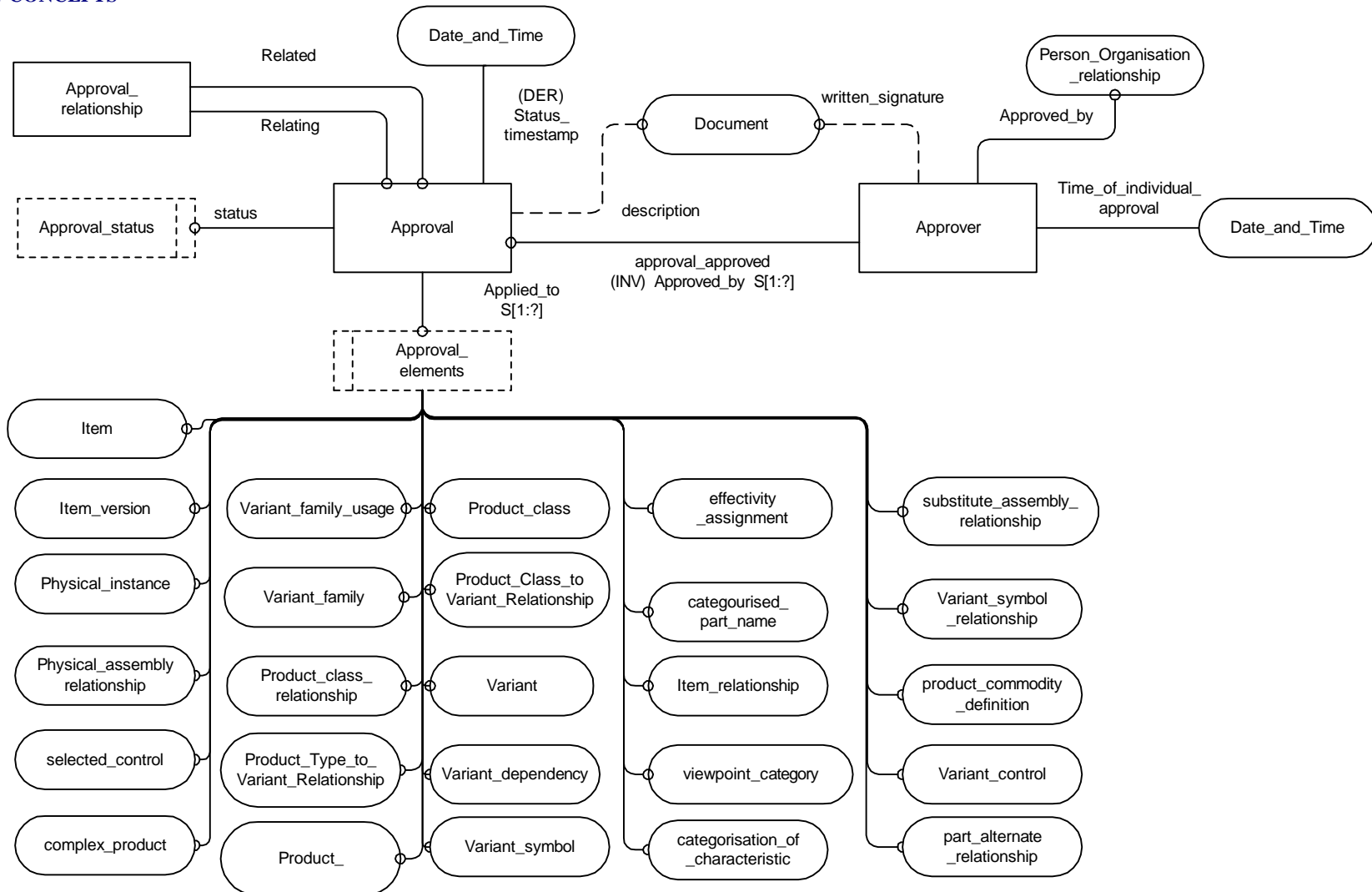
VOLVO	Document No. PDMReq-4.4	Title Requirements model		Diagram 17/19
Issuer (dept, name, phone, place, sign) Patrick Wennergren	Status Frozen	Date 98-11-03	Version 3.2	Reg no
Subject Logical Platform for Volvo PDM information requirements				

EFFECTIVITY CONCEPTS



VOLVO	Document No. PDMReq-4.4	Title Requirements model		Diagram 18/19
Issuer (dept, name, phone, place, sign) Patrick Wennergren	Status Frozen	Date 98-11-03	Version 3.2	Reg no
Subject Logical Platform for Volvo PDM information requirements				

APPROVAL CONCEPTS



VOLVO	Document No. PDMReq-4.4	Title Requirements model		Diagram 19/19
Issuer (dept, name, phone, place, sign) Patrick Wennergren	Status Frozen	Date 98-11-03	Version 3.2	Reg no
Subject Logical Platform for Volvo PDM information requirements				

CHANGE MANAGEMENT



**Not complete,
Don't implement**

